

**When it comes
to LED lighting,
make an
enlightened
choice...**

**LED LIGHTING FOR INDUSTRIAL
AND HAZARDOUS AREAS**

UNION
SUPPLIES

LED General Light

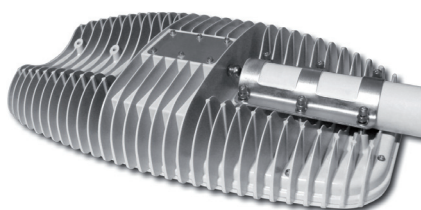


Pendent Light

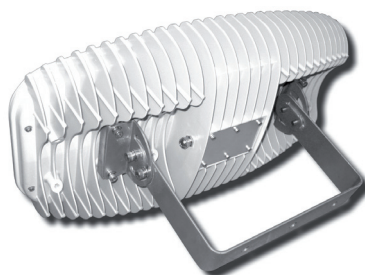
Flexible and reliable, a lamp for all projects.
Only LED lamp in the world can replace 1,000W HID.



Project Light



Street Light



Floodlight

Compact version also available for low power applications.



Project Light



Floodlight



Street Light

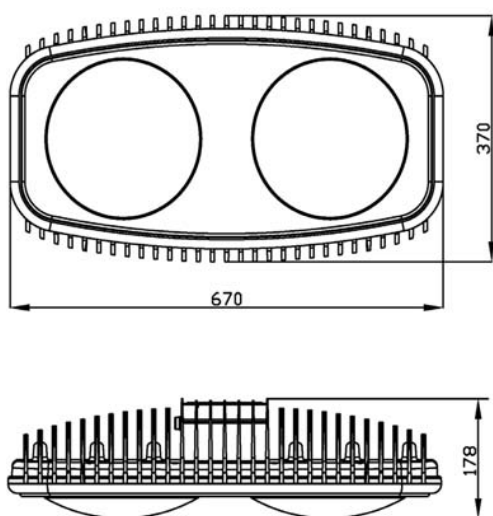


Pendent Light

ISO 9001



Standard LED General Light



FEATURES & CHARACTERISTIC

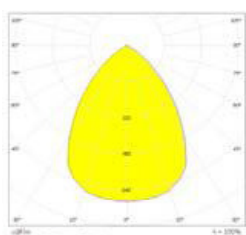
- Patent multi-function design, suitable for all projects
- 5 year warranty
- LED Chips, 120 lm/w lamp efficiency*
- 80% lumen maintenance over 50,000 hours
- Dimmable versions available
- Built-in surge protection
- Built-in thermal protection
- Maintenance free
- Mercury free
- No UV or IR
- Universal input without additional adapter, 80-315Vac, 80-400Vdc
- Instant start and flicker free
- High uniformity and colour rendering

*120lm/w only for the 6000K LED with 120° and 60° lens.

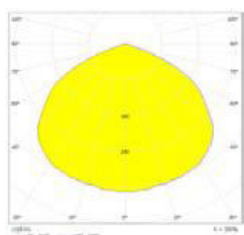
TYPICAL APPLICATION

Street | Bridge | Architecture | Warehouse | Stadium | Tunnel | Garden | Parking | Billboard | Plaza | Show Room | Factory | Shopping Mall | Petrol Station | Conference Centers | Cold Storage | Floodlighting

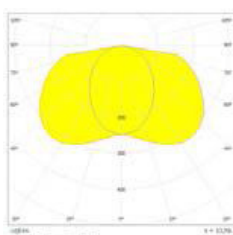
LENS AVAILABLE FOR ALL PROJECTS



60° lens



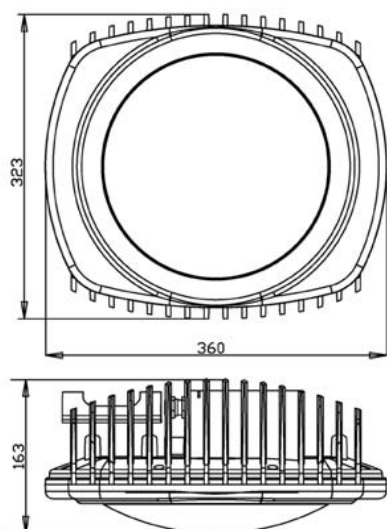
120° lens



140° x 60° lens

Model:		UNION-210W	UNION-270W	UNION-400W
Power Consumption:	LEDs:	189W	243W	360W
	Driver:	21W	27W	40W
	Total:	210W	270W	400W
Initial Lumen Flux:		25200 lm	32400 lm	48000 lm
Replace HID Lamp:		400-500W	500-600W	600-1000W
Dimension:	670x370x180mm			
Net Weight:	13kg (28.6lbs)			
Colour Temperature:	4000K (Warm White) / 6000K (Pure White)			
Colour Rendering:	≥ Ra75			
Working Life:	≥ 50000 hrs			
Housing:	Copper free aluminium			
Finish:	Cathode EPD			
IP Class:	IP 65 (Upgradeable to IP 67)			
Insulation Class:	Class I (Upgradeable to Class II)			
Working Temperature:	-40C ~ 60C / -40F ~ 140F			
Working Humidity:	10% ~ 95%			
AC Input:	80 ~ 315Vac			
DC Input:	80 ~ 400Vdc, (12Vdc, 24Vdc and other inputs available on request)			
THD:	<10%			
Power Factor:	≥0.98			
Warranty:	5 year			

Compact LED General Light



FEATURES & CHARACTERISTIC

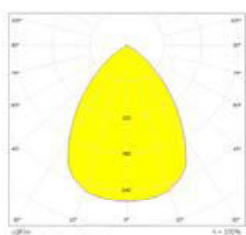
- Patent multi-function design, suitable for all projects
- 5 year warranty
- LED Chips, 120 lm/w lamp efficiency*
- 80% lumen maintenance over 50,000 hours
- Dimmable versions available
- Built-in surge protection
- Built-in thermal protection
- Maintenance free
- Mercury free
- No UV or IR
- Universal input without additional adapter, 80-315Vac, 80-400Vdc
- Instant start and flicker free
- High uniformity and colour rendering

*120lm/w only for the 6000K LED with 120° and 60° lens.

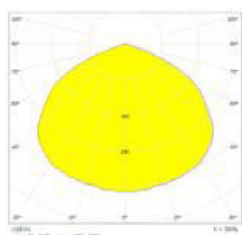
TYPICAL APPLICATION

Street | Bridge | Architecture | Warehouse | Stadium | Tunnel | Garden | Parking | Billboard | Plaza | Show Room | Factory | Shopping Mall | Petrol Station | Conference Centers | Cold Storage | Floodlighting

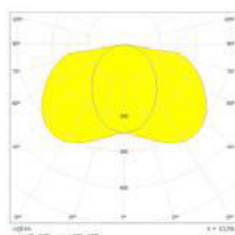
LENS AVAILABLE FOR ALL PROJECTS



60° lens



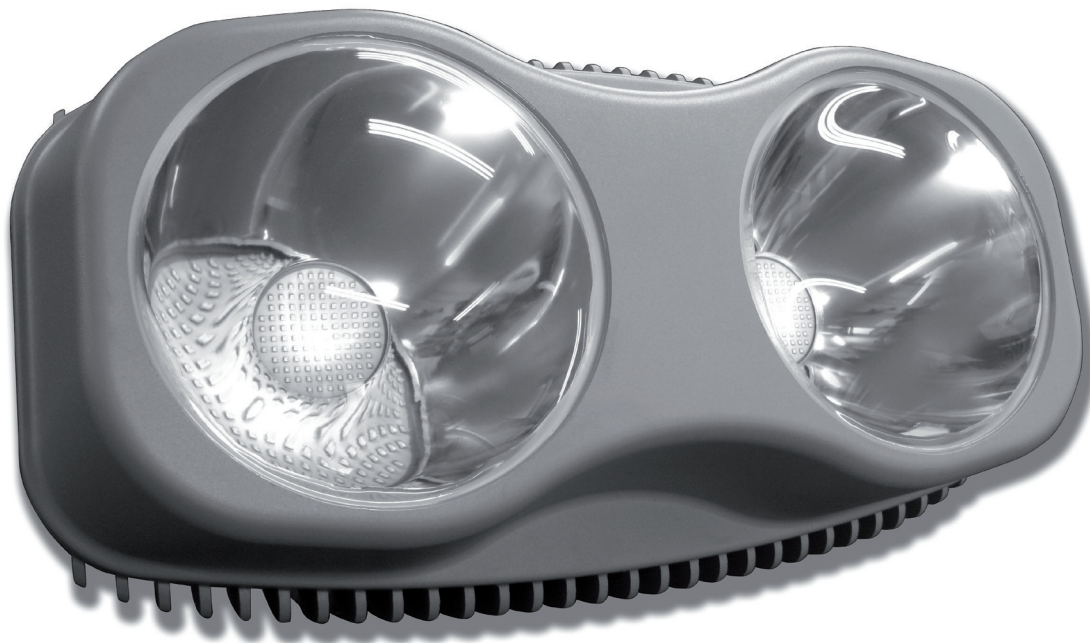
120° lens



140° x 60° lens

Model:		UNION-30W	UNION-60W	UNION-90W	UNION-120W	UNION-150W	UNION-180W
Power Consumption:	LEDs:	25W	50W	80W	108W	135W	162W
	Driver:	5W	10W	10W	12W	15W	18W
	Total:	30W	60W	90W	120W	150W	180W
Initial Lumen Flux:		3600 lm	6600 lm	10800 lm	14400lm	18000 lm	21600 lm
Replace HID Lamp:		50-100W	100-150W	150-250W	250-300W	300-400W	400-500W
Dimension:	360x323x163mm						
Net Weight:	8kg (17.6lbs)						
Colour Temperature:	4000K (Warm White) / 6000K (Pure White)						
Colour Rendering:	≥ Ra75						
Working Life:	≥ 50000 hrs						
Housing:	Copper free aluminium						
Finish:	Cathode EPD						
IP Class:	IP 65 (Upgradeable to IP 67)						
Insulation Class:	Class I (Upgradeable to Class II)						
Working Temperature:	-40C ~ 60C / -40F ~ 140F						
Working Humidity:	10% ~ 95%						
AC Input:	80 ~ 315Vac						
DC Input:	80 ~ 400Vdc, (12Vdc, 24Vdc and other inputs available on request)						
THD:	<10%						
Power Factor:	≥0.98						
Warranty:	5 year						

LED Projection Light



20° beam angle for long distance projection lighting applications.

Flexible and reliable mounting system.

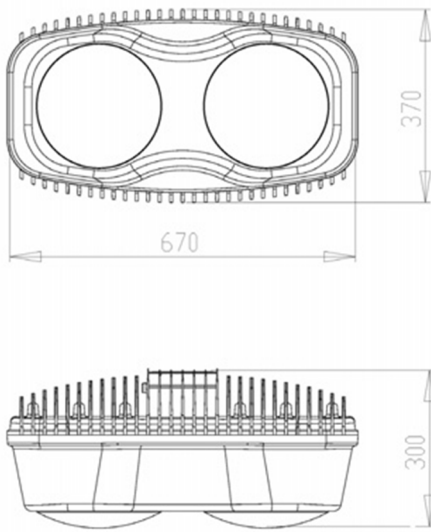
Only LED lamp in the world can replace 1,000W HID.



ISO **9001**



LED Projection Light



FEATURES & CHARACTERISTIC

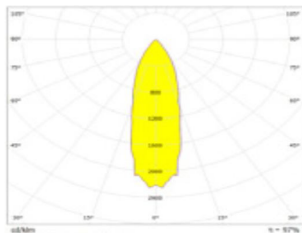
- 20° beam angle for long distance projection lighting applications
- Patent multi-function design, suitable for all projects
- 5 year warranty
- LED Chips, 110 lm/w lamp efficiency*
- 80% lumen maintenance over 50,000 hours
- Dimmable versions available
- Built-in surge protection
- Built-in thermal protection
- Maintenance free
- Mercury free
- No UV or IR
- Universal input without additional adapter, 80-315Vac, 80-400Vdc
- Instant start and flicker free
- High uniformity and colour rendering

*110lm/w only for the 6000K LED with 120° lens.

TYPICAL APPLICATION

Bridge | Architecture | Warehouse | Stadium | Tunnel | Garden | Parking | Billboard | Plaza | Factory | Conference Centers | High Mast | Floodlighting

LENS AVAILABLE



20° lens

Model:		UNION-210P	UNION-270P	UNION-400P
Power Consumption:	LEDs:	189W	243W	360W
	Driver:	21W	27W	40W
	Total:	210W	270W	400W
Initial Lumen Flux:		23100 lm	29700 lm	44000 lm
Replace HID Lamp:		400-600W	600-800W	800-1000W
Dimension:	670x370x300mm			
Net Weight:	16kg (35 lbs)			
Colour Temperature:	4000K (Warm White) / 6000K (Pure White)			
Colour Rendering:	≥ Ra75			
Working Life:	≥ 50000 hrs			
Housing:	Copper free aluminium			
Lens:	Tempered Glass			
Finish:	Cathode EPD			
IP Class:	IP 65 (Upgradeable to IP 67)			
Insulation Class:	Class I (Upgradeable to Class II)			
Working Temperature:	-40C ~ 60C / -40F ~ 140F			
Working Humidity:	10% ~ 95%			
AC Input:	80 ~ 315Vac (347Vac available on request)			
DC Input:	80 ~ 400Vdc, (12Vdc, 24Vdc and other inputs available on request)			
THD:	<10%			
Power Factor:	≥0.98			
Warranty:	5 year			

Ordering Matrix

FIELD	OPTIONS
Wattage	30 60 90 120 150 180 210 270 400 210P (Projection Light Only) 270P (Projection Light Only) 400P (Projection Light Only)
Colour Temperature	W – Warm White (4000K) P – Pure White (6000K)
Beam Angle	20 – 20° (Projection Light Only) 60 – 60° 120 – 120° 140 – 140°
IP Rating	IP65 IP67
Mounting Option	1 – Pendant 2 – Pole 3 – Bracket
Dimming	0 – Dimming Not Required 1 – DALI Dimmable 2 – 0-10V DC Dimmable

EXAMPLE OF CODE

UNION-180/P/120/IP65/3/1

Wattage	180	= 180W
Colour Temperature	P	= Pure White (6000K)
Beam Angle	120	= 120°
IP Rating	IP65	= IP65
Mounting Option	3	= Bracket
Dimming	1	= DALI Dimmable

Baylor Brakes
Bearings
Bug Blowers
Control Gear
Couplings
Drilling Motors
Electrical Products

Electric Motors
Gearboxes
Heater Tapes
Hydraulic Components
Interfaces
Motor Control Centres
Motor Slide Rails/Slide Base

LED Lighting
Pumps
Sensors
Transformers
Transmission Equipment
Variable Speed Drives
Vibrator Motors

**Industry knowledge,
competitive pricing,
professional service,
fast turnaround and
global distribution**

www.unionsupplies.com

Union Supplies
Blackness Road
Aberdeen
AB12 3LH

T: +44 (0) 1224 897755
F: +44 (0) 1224 877121
sales@unionsupplies.com
www.unionsupplies.com

Aberdeen
Baku
Dubai
Houston

UNION
SUPPLIES